

FACULTY OF
SOCIAL
SCIENCES
社會科學學院

DEPARTMENT OF
COMMUNICATION
傳播系

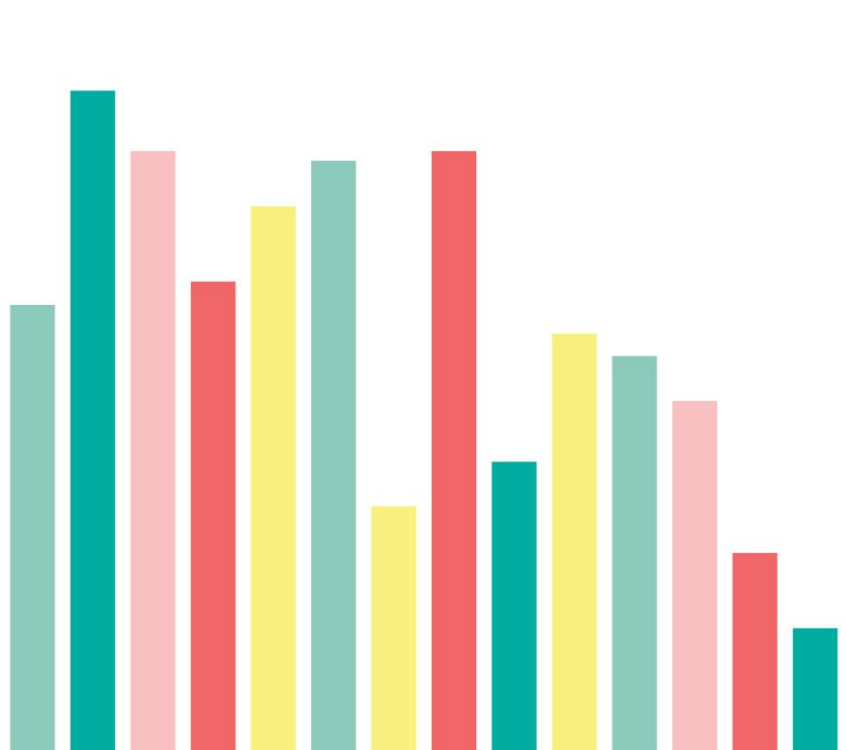
DEPARTMENT OF
ECONOMICS
經濟學系

DEPARTMENT OF
GOVERNMENT & PUBLIC
ADMINISTRATION
政府與行政學系

DEPARTMENT OF PSYCHOLOGY
心理學系

DEPARTMENT OF SOCIOLOGY
社會學系

**Exchange
Programme
Briefing 2024**





The purpose of the exchange programmes and academic visits is to broaden the cultural vision of our students. Selected students from different departments spend up to one semester at a foreign university.

海外交流計劃旨在擴闊學生視野，被挑選的學生能在海外高等院校進行一學期的交流計劃。

ASIA

Chinese University of Hong Kong (CUHK)-Shenzhen, China
China Foreign Affairs University, China
De La Salle University, the Philippines
East China Normal University, China
Ritsumeikan Asia Pacific University, Japan
Shantou University, China
Taiwan Shih Hsin University, Taiwan Region
University of Malaya, Malaysia
Zhejiang University, China

EUROPE

De Montfort University, United Kingdom
Hanze University of Applied Sciences, the Netherlands
Institut des Hautes Études des Communications Sociales (IHECS), Belgium
Libera Università Internazionale degli Studi Sociali Guido Carli (LUISS), Italy
Linköping University, Sweden
Linnaeus University, Sweden
Maastricht University, the Netherlands
Universidade Católica Portuguesa, Portugal
Université Catholique de Lille, France
Université Libre de Bruxelles (ULB), Belgium
University Institute of Lisbon (ISCTE), Portugal
University of Coimbra, Portugal
University of Southern Denmark, Denmark
Turku University, Finland

AMERICAS

Fundação Getulio Vargas (FGV), Brazil
George Mason University, U.S.
Susquehanna University, U.S.
Universidad Austral, Argentina

亞洲

中國—香港中文大學（深圳）
中國—外交學院
菲律賓—德拉薩爾大學
中國—華東師範大學
日本—立命館亞洲太平洋大學
中國—汕頭大學
台灣地區—世新大學
馬來西亞—馬來亞大學
中國—浙江大學

歐洲

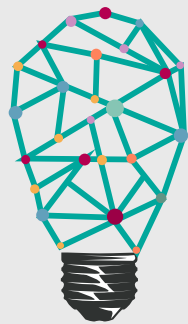
英國—德蒙福特大學
荷蘭—格羅寧根漢斯應用科技大學
比利時—社會傳播研究學院
意大利—國際社會科學自由大學
瑞典—林雪平大學
瑞典—林奈大學
荷蘭—馬城大學
葡萄牙—葡萄牙天主教大學
法國—里爾天主教大學
比利時—布魯塞爾自由大學
葡萄牙—里斯本大學學院
葡萄牙—科英布拉大學
丹麥—南丹麥大學
芬蘭—圖爾庫大學

美洲

巴西—FGV瓦加斯大學
美國—喬治梅森大學
美國—薩斯奎漢納大學
阿根廷—南方大學

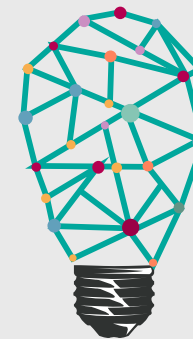
海外交流

EXCHANGE PROGRAMMES



ALL FSS students

- CUHK-Shenzhen
- Fundação Getulio Vargas (FGV)
- Linköping University
- Susquehanna University
- University Institute of Lisbon
- University of Coimbra
- University of Southern Denmark
- University of Turku
- University of Malaya



Economics, Gov't and Public Administration & Psychology

- De Montfort University





Department of
Communication

Communication

- East China Normal University
- Hanze University of Applied Sciences
- Institut des Hautes Études des Communications Sociales (IHECS)
- Shantou University
- Shih Hsin University
- Universidade Católica Portuguesa



Department of
Government and
Public Administration

Gov't and Public Administration

- China Foreign Affairs University
- Linnaeus University
- Ritsumeikan Asia Pacific University
- Libera Università Internazionale degli Studi Sociali Guido Carli (LUISS)
- Université Libre de Bruxelles (ULB)
- Maastricht University
- Université Catholique de Lille
- George Mason University
- Zhejiang University



澳門大學
UNIVERSIDADE DE MACAU
UNIVERSITY OF MACAU



社會科學學院
FACULDADE DE CIÊNCIAS SOCIAIS
FACULTY OF SOCIAL SCIENCES

Level of Exchange

- Largely designed for UG students
- 8 programmes also for Master students:
 - East China Normal University
 - Libera Università Internazionale degli Studi Sociali Guido Carli (LUISS)
 - Linköping University
 - Universidade Católica Portuguesa
 - Université Catholique de Lille
 - Université Libre de Bruxelles (ULB)
 - University of Coimbra
 - University of Southern Denmark

Exchange Duration

Most of the exchange programmes allow the students for an exchange period of one academic semester and some enable participating students to go for exchange for one academic year.

Learning Agreement

Aim:

Preliminarily checking on the courses of the host university to ensure a smooth credit transfer. Students are required to complete learning agreement before department of exchange.

1.

Before leaving, **check against the courses to be offered by the host institute** and please DO take a thorough **check of your own programme study plan**

Fill out the agreement form with the complete “pairing” of equivalent courses, in accordance with the guidelines set by Registry

2.

Consult the dept head/ programme coordinator about the possible equivalent courses offered by UM

Seek endorsement from the course lecturers & the dept head/ programme coordinator

Application and Subsidies

**Exchange
Period**

**2024/2025
2nd Semester**

**Exchange
Subsidies**

Application Period: 22nd – 31st August 2024

Universities Open for Exchange Application:

- Chinese University of Hong Kong (CUHK)-Shenzhen, China
- ISCTE - University Institute of Lisbon, Portugal
- University of Coimbra, Portugal
- University of Malaya, Malaysia
- (DCOM) Catholic University of Portugal,
- (DCOM) East China Normal University, China
- (DCOM) Hanze University of Applied Sciences Groningen, the Netherlands
- (DCOM) Institut des Hautes Etudes des Communications Sociales, Belgium
- (DCOM) Shantou University, China
- (DGPA) China Foreign Affairs University, China
- (DGPA) Libera Università Internazionale degli Studi Sociali Guido Carli (LUISS), Italy
- (DGPA) The Catholic University of Lille, France
- (DGPA) Maastricht University, the Netherlands
- (DGPA) Université Libre de Bruxelles, Belgium
- (DGPA) Zhejiang University, China

GAO Outgoing Exchange Scholarship (OES)

Application Period: 21st – 30th October 2024



Enquiry for Exchange Programmes:

Tel: 8822 4018

EMAIL: fss.exchange@um.edu.mo

THANK YOU

謝謝

Faculty of Social Sciences

Humanities and Social Sciences Building (E21B)

University of Macau

Avenida da Universidade, Taipa, Macau, China

Tel: (+853) 8822 8976

Fax: (+853) 8822 2337

Email: fss.enquiry@um.edu.mo

Follow us!

