

FACULTY OF  
SOCIAL  
SCIENCES  
社會科學學院

DEPARTMENT OF SOCIOLOGY  
社會學系

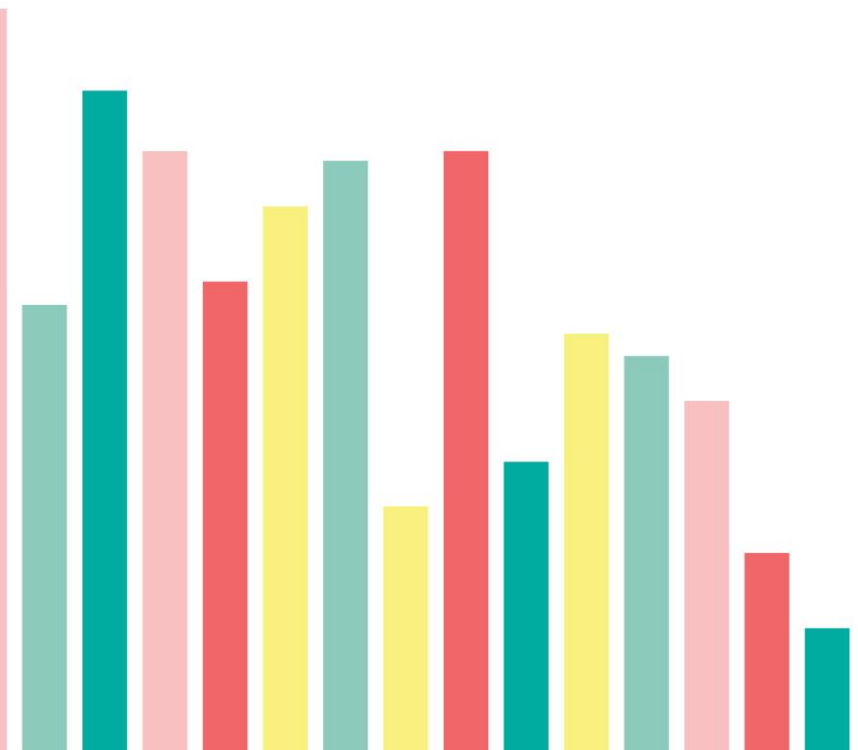
DEPARTMENT OF PSYCHOLOGY  
心理學系

DEPARTMENT OF  
GOVERNMENT & PUBLIC  
ADMINISTRATION  
政府與行政學系

DEPARTMENT OF  
ECONOMICS  
經濟學系

DEPARTMENT OF  
COMMUNICATION  
傳播系

**Exchange  
Programme  
Briefing 2024/2025**





The purpose of the exchange programmes and academic visits is to broaden the cultural vision of our students. Selected students from different departments spend up to one semester at a foreign university.

海外交流計劃旨在擴闊學生視野，被挑選的學生能在海外高等院校進行一學期的交流計劃。

## ASIA

Chinese University of Hong Kong (CUHK)-Shenzhen, China  
China Foreign Affairs University, China  
De La Salle University, the Philippines  
East China Normal University, China  
Shantou University, China  
Taiwan Shih Hsin University, Taiwan Region  
University of Malaya, Malaysia  
Zhejiang University, China

## EUROPE

De Montfort University, United Kingdom  
Hanze University of Applied Sciences, the Netherlands  
Institut des Hautes Études des Communications Sociales (IHECS), Belgium  
Linköping University, Sweden  
Maastricht University, the Netherlands  
Universidade Católica Portuguesa, Portugal  
Université Catholique de Lille, France  
Université Libre de Bruxelles (ULB), Belgium  
University Institute of Lisbon (ISCTE), Portugal  
University of Coimbra, Portugal  
University of Southern Denmark, Denmark  
Turku University, Finland

## AMERICAS

Fundação Getulio Vargas (FGV), Brazil  
Susquehanna University, U.S.  
Universidad Austral, Argentina

## 亞洲

中國—香港中文大學（深圳）  
中國—外交學院  
菲律賓—德拉薩爾大學  
中國—華東師範大學  
中國—汕頭大學  
台灣地區—世新大學  
馬來西亞—馬來亞大學  
中國—浙江大學

## 歐洲

英國—德蒙福特大學  
荷蘭—格羅寧根漢斯應用科技大學  
比利時—社會傳播研究學院  
瑞典—林雪平大學  
荷蘭—馬城大學  
葡萄牙—葡萄牙天主教大學  
法國—里爾天主教大學  
比利時—布魯塞爾自由大學  
葡萄牙—里斯本大學學院  
葡萄牙—科英布拉大學  
丹麥—南丹麥大學  
芬蘭—圖爾庫大學

## 美洲

巴西—FGV瓦加斯大學  
美國—薩斯奎漢納大學  
阿根廷—南方大學

海外交流

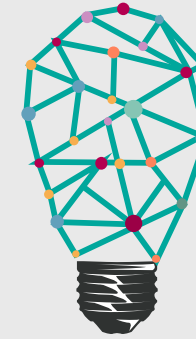
EXCHANGE PROGRAMMES

as of 2 Jan 2025



## ALL FSS students

- CUHK-Shenzhen
- Fundação Getulio Vargas (FGV)
- Linköping University
- Susquehanna University
- University Institute of Lisbon
- University of Coimbra
- University of Southern Denmark
- University of Turku
- University of Malaya



## Economics, Gov't and Public Administration & Psychology

- De Montfort University





Department of  
Communication

## Communication

- East China Normal University
- Hanze University of Applied Sciences
- Institut des Hautes Études des Communications Sociales (IHECS)
- Shantou University
- Shih Hsin University
- Universidade Católica Portuguesa



Department of  
Government and  
Public Administration

## Gov't and Public Administration

- China Foreign Affairs University
- Université Libre de Bruxelles (ULB)
- Maastricht University
- Université Catholique de Lille
- George Mason University
- Zhejiang University



澳門大學  
UNIVERSIDADE DE MACAU  
UNIVERSITY OF MACAU



社會科學學院  
FACULDADE DE CIÊNCIAS SOCIAIS  
FACULTY OF SOCIAL SCIENCES

## **Level of Exchange**

- Largely designed for UG students
- 7 programmes also for Master students:
  - East China Normal University
  - Linköping University
  - Universidade Católica Portuguesa
  - Université Catholique de Lille
  - Université Libre de Bruxelles (ULB)
  - University of Coimbra
  - University of Southern Denmark

## **Exchange Duration**

Most of the exchange programmes allow the students for an exchange period of one academic semester and some enable participating students to go for exchange for one academic year.

# Learning Agreement

## Aim:

Preliminarily checking on the courses of the host university to ensure a smooth credit transfer. Students are required to complete learning agreement before department of exchange.

1.

Before leaving, check against the courses to be offered by the host institute and please DO take a thorough **check of your own programme study plan**

**Fill out the agreement form** with the complete “pairing” of equivalent courses, in accordance with the guidelines set by Registry

2.

**Consult the dept head/ programme coordinator** about the possible equivalent courses offered by UM

**Seek endorsement** from the course lecturers & the dept head/ programme coordinator

## Points to Note

### Expenses

- Pay tuition fees to UM during exchange period
- Responsible for their own living expenses, including but not limited to accommodation, transportation, insurance and visa, etc.

### Credit Transfer

- Read through “Rules for Semester-based Outgoing Exchange Programmes” and pay attention to the credits requirement.
- Acknowledged that the course arrangement during exchange study is subject to change.
- Submit ‘course exemption / wavier form’ for credit transfer upon arrival in UM after exchange

### Assessment

- Applications will be reviewed by the Exchange Selection Committee, which will make recommendations.



# Application

**Exchange  
Period**

**2025/2026  
1<sup>st</sup> Semester**

## **Application Period:**

**9th – 22nd January 2025**

## **Application System**

Applications should be made via the “**Outbound Exchange and Scholarship Application System**”

(<https://isw.um.edu.mo/seas>)

## **Universities Open for Exchange Application:**

The details of the exchange programmes open for 1st semester 2025/2026 will be posted on the Faculty website:

<https://fss.um.edu.mo/exchange-programmes/>



**Enquiry for Exchange Programmes:**  
**Tel: 8822 4018**  
**EMAIL: [fss.exchange@um.edu.mo](mailto:fss.exchange@um.edu.mo)**

**THANK YOU**

**謝謝**

Faculty of Social Sciences  
Humanities and Social Sciences Building (E21B)  
University of Macau  
Avenida da Universidade, Taipa, Macau, China  
Tel: (+853) 8822 8976  
Fax: (+853) 8822 2337  
Email: [fss.enquiry@um.edu.mo](mailto:fss.enquiry@um.edu.mo)

**Follow us!**

