

FACULTY OF
SOCIAL
SCIENCES
社會科學學院

DEPARTMENT OF
COMMUNICATION

傳播系

DEPARTMENT OF
ECONOMICS

經濟學系

DEPARTMENT OF
GOVERNMENT & PUBLIC
ADMINISTRATION

政府與行政學系

DEPARTMENT OF PSYCHOLOGY

心理學系

DEPARTMENT OF SOCIOLOGY

社會學系

Exchange Programme Briefing 2025/2026

27 Aug 2025



澳門大學
UNIVERSIDADE DE MACAU
UNIVERSITY OF MACAU



社會科學學院
FACULDADE DE CIÊNCIAS SOCIAIS
FACULTY OF SOCIAL SCIENCES



The purpose of the exchange programmes and academic visits is to broaden the cultural vision of our students. Selected students from different departments spend up to one semester at a foreign university.

海外交流計劃旨在擴闊學生視野，被挑選的學生能在海外高等院校進行一學期的交流計劃。

ASIA

Chinese University of Hong Kong (CUHK)-Shenzhen, China
China Foreign Affairs University, China
De La Salle University, the Philippines
East China Normal University, China
Shantou University, China
Taiwan Shih Hsin University, Taiwan Region
University of Malaya, Malaysia
Zhejiang University, China

EUROPE

De Montfort University, United Kingdom
Hanze University of Applied Sciences, the Netherlands
Institut des Hautes Études des Communications Sociales (IHECS), Belgium
Linköping University, Sweden
Maastricht University, the Netherlands
Universidade Católica Portuguesa, Portugal
Université Catholique de Lille, France
Université Libre de Bruxelles (ULB), Belgium
University Institute of Lisbon (ISCTE), Portugal
University of Coimbra, Portugal
University of Southern Denmark, Denmark
University of Twente, the Netherlands
Turku University, Finland

AMERICAS

Fundação Getulio Vargas (FGV), Brazil
Susquehanna University, U.S.
Universidad Austral, Argentina

亞洲

中國—香港中文大學（深圳）
中國—外交學院
菲律賓—德拉薩爾大學
中國—華東師範大學
中國—汕頭大學
台灣地區—世新大學
馬來西亞—馬來亞大學
中國—浙江大學

歐洲

英國—德蒙福特大學
荷蘭—格羅寧根漢斯應用科技大學
比利時—社會傳播研究學院
瑞典—林雪平大學
荷蘭—馬城大學
葡萄牙—葡萄牙天主教大學
法國—里爾天主教大學
比利時—布魯塞爾自由大學
葡萄牙—里斯本大學學院
葡萄牙—科英布拉大學
丹麥—南丹麥大學
荷蘭—特文特大學
芬蘭—圖爾庫大學

美洲

巴西—FGV瓦加斯大學
美國—薩斯奎漢納大學
阿根廷—南方大學

海外交流

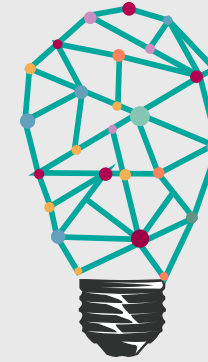
EXCHANGE PROGRAMMES

as of 20 Aug 2025



ALL FSS students

- CUHK-Shenzhen
- Fundação Getulio Vargas (FGV)
- Linköping University
- Susquehanna University
- University Institute of Lisbon
- University of Coimbra
- University of Southern Denmark
- University of Turku
- University of Twente



Economics, Gov't and Public Administration & Psychology

- De Montfort University





Department of
Communication

Communication

- East China Normal University
- Hanze University of Applied Sciences
- Institut des Hautes Études des Communications Sociales (IHECS)
- Shantou University
- Shih Hsin University
- Universidade Católica Portuguesa



Department of
Government and
Public Administration

Gov't and Public Administration

- China Foreign Affairs University
- Université Libre de Bruxelles (ULB)
- Maastricht University
- Université Catholique de Lille
- Zhejiang University



澳門大學
UNIVERSIDADE DE MACAU
UNIVERSITY OF MACAU



社會科學學院
FACULDADE DE CIÊNCIAS SOCIAIS
FACULTY OF SOCIAL SCIENCES

Level of Exchange

- Largely designed for UG students
- 7 programmes also for Master students:
 - East China Normal University
 - Linköping University
 - Universidade Católica Portuguesa
 - Université Catholique de Lille
 - Université Libre de Bruxelles (ULB)
 - University of Coimbra
 - University of Southern Denmark

Exchange Duration

Most of the exchange programmes allow the students for an exchange period of one academic semester and some enable participating students to go for exchange for one academic year.

Learning Agreement

Aim:

Preliminarily checking on the courses of the host university to ensure a smooth credit transfer. Students are required to complete learning agreement before department of exchange.

1.

Before leaving, **check against the courses to be offered by the host institute** and please DO take a thorough **check of your own programme study plan**

2.

Consult the dept head/ programme coordinator about the possible equivalent courses offered by UM

Fill out the agreement form with the complete “pairing” of equivalent courses, in accordance with the guidelines set by Registry

Seek endorsement from the course lecturers & the dept head/ programme coordinator

Points to Note

Expenses

- Pay tuition fees to UM during exchange period
- Responsible for their own living expenses, including but not limited to accommodation, transportation, insurance and visa, etc.

Credit Transfer

- Read through “Rules for Semester-based Outgoing Exchange Programmes” and pay attention to the credits requirement.
- Acknowledged that the course arrangement during exchange study is subject to change.
- Submit ‘course exemption / wavier form’ for credit transfer upon arrival in UM after exchange

Assessment

- Applications will be reviewed by the Exchange Selection Committee, which will make recommendations.

Application

**Exchange
Period**

**2025/2026
2nd Semester**

Application Period:

28th Aug – 12th Sept 2025

Application System

Applications should be made via the “**Outbound Exchange and Scholarship Application System**”
(<https://isw.um.edu.mo/seas>)

Information regarding exchange universities will be posted on FSS Website.



Enquiry for Exchange Programmes:
Tel: 8822 4018
EMAIL: fss.exchange@um.edu.mo

THANK YOU

謝謝

Faculty of Social Sciences
Humanities and Social Sciences Building
(E21B)
University of Macau
Avenida da Universidade, Taipa, Macau, China
Tel: (+853) 8822 8976
Fax: (+853) 8822 2337
Email: fss.enquiry@um.edu.mo

Follow us!

