

Storm surge evacuation

plan for low-lying

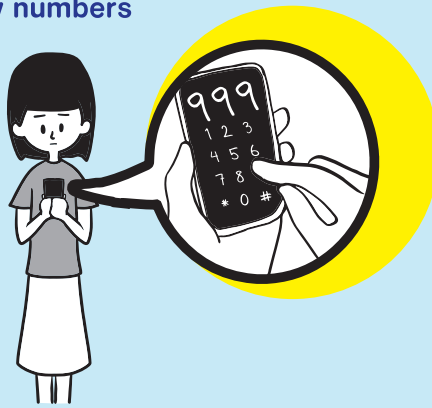
areas during typhoon

In case of a public emergency, all forces, public authorities and public/private entities of the Macao SAR should, according to Executive Ruling No. 78/2009, comply with the Alert and Alarm System for Public Emergencies, and provide necessary assistance under applicable legislation in the areas of internal security and civil protection.



Storm surge comes quickly and fiercely; be ready and get to high ground with your family.

Emergency numbers



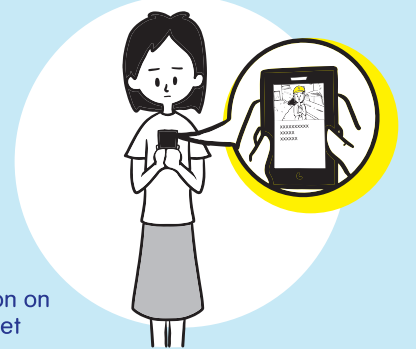
Public Security Police Force	999、110、112 2857 3333
(Emergency SMS Service)	6330 9999
Fire Services Bureau	120、119、2857 2222
Civil Protection Operational Centre	113、8897 0160、
Assistance and enquiry hotline	8897 0170
Islands Operational Centre	2888 2070
Customs Service	2855 9944
Judiciary Police	993
Civil Aviation Authority	2886 1111
Education and Youth Development Bureau	2855 5533、8397 2318
Macao Government Tourism Office	2833 3000、2831 5566
Macao Meteorological and Geophysical Bureau	1311、2885 0530
Social Welfare Bureau (Ilha Verde Refuge Center) (Taipa and Coloane Refuge Center)	2859 4471 2882 5623
Municipal Affairs Bureau	2833 7676、2822 7765
Conde S. Januário Hospital	2831 3731
Kiang-Wu Hospital	2837 1333
Macao Telecommunication Company	1000
Macao Electricity Company	2833 9922
Macao Water Supply Company	2822 0088

1

Pay attention to storm surge messages and evacuation broadcasting



Television/Radio



Information on the Internet



On-street broadcast

2

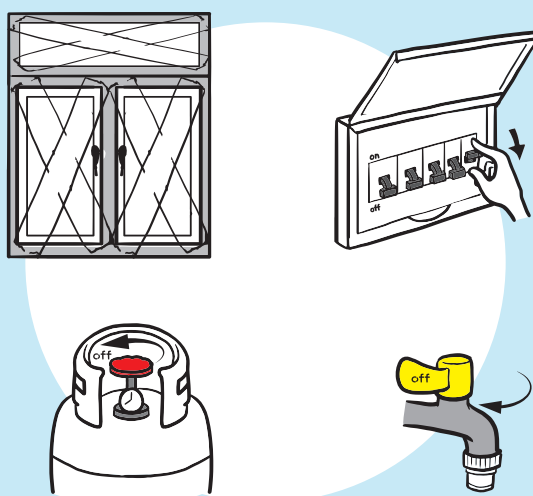
Bring your personal belongings



Conduct a head count of your family members



Close the doors and windows; disconnect electricity, gas and water supplies



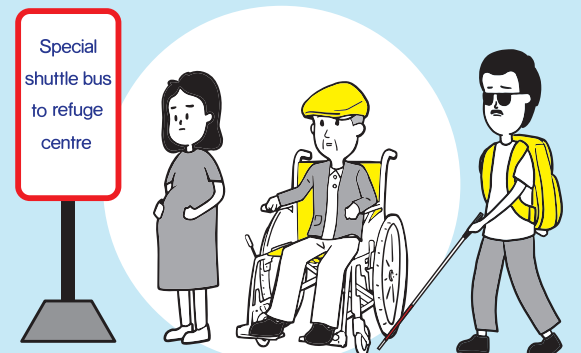
4

Try to walk to the nearest high ground:

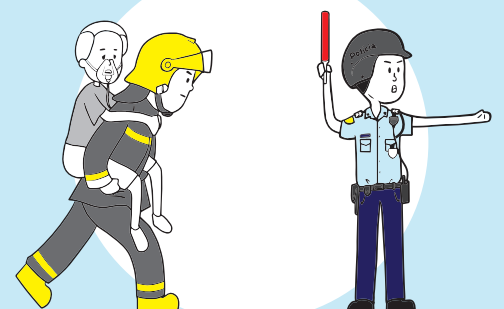
1. Homes of relatives and friends
2. Mutual assistance in the neighbourhood
3. Refuge centre



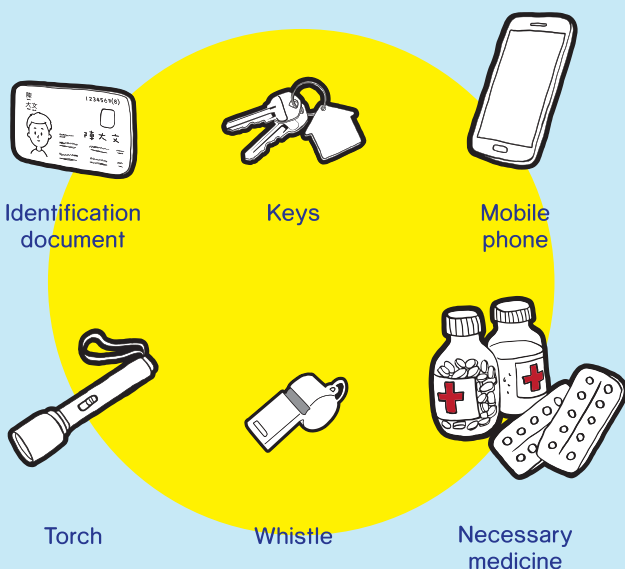
Persons in need may take the available transportation at the designated assembly points to the Refuge centres



Please follow the police instructions and evacuate in order



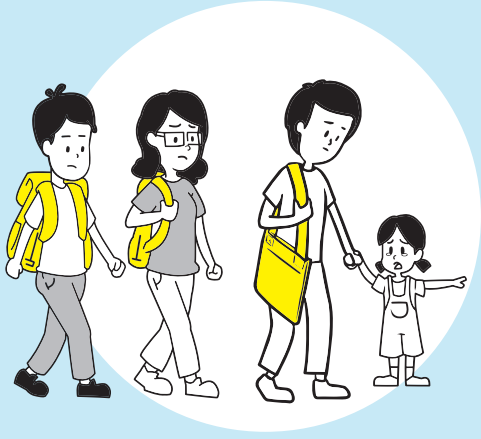
5



3

Safe and orderly evacuation

When time is sufficient, evacuate to a safe place (homes of relatives, friends, neighbours and refuge centre) according to the plan in advance.



Quick and safe evacuation

When time is insufficient, evacuation is carried out quickly.



Emergency evacuation

When time is limited, emergency evacuation is carried out to safeguard lives (escape to high ground or emergency evacuation staying point).



Refuge centres

Name	Address
1. Ilha Verde Refuge Centre	Avenida do Conselheiro Borja
2. Tap Seac Multisport Pavilion - Pavilion A	Rua de Ferreira do Amaral
3. Tap Seac Multisport Pavilion - Pavilion B	Rua de Ferreira do Amaral
4. Instituto Salesiano	16 Rua de S. Lourenço
5. Escola Católica Estrela do Mar	36 Rua do Padre António
6. Multisport Pavilion, Escola Lusó-Chinesa Técnico-Profissional	Rua 1º de Maio
7. Pui Ching Middle School	7 Avenida de Horta e Costa
8. Macao Polytechnic University	Rua de Luis Gonzaga Gomes
9. Colégio Mateus Ricci	1A, Travessa de S. Paulo

Download the App of "Geoguide for emergency" to search for the locations of Refuge Centres and expected flooding situation of different "Storm Surge" warning levels.

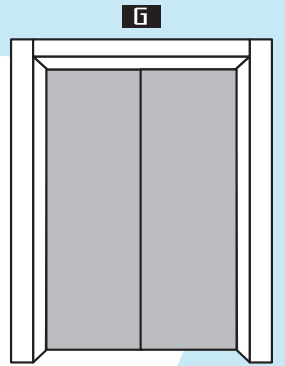


Name	Address
10. Macao Federation of Trade Unions Workers Stadium	Istmo de Ferreira do Amaral, Macau
11. Keang Peng School	Rua de Francisco Xavier Pereira, N° 126-128A, Macau
12. Taipa Refugee Centre	Rua do Regedor, Taipa
13. Olympic Sports Centre(Taipa)	Avenida Olímpica, Taipa
14. Training Base of Macao Flying Eagle Association	46, Rua da Cordoaria, Coloane
15. Macao Academy of Public Security Forces	Calçada do Quartel, Coloane
16. Taipa and Coloane Social Service Centre	Seac Pai Van, Coloane
17. Macao East Asian Games Dome(Coloane)	Avenida da Nave Desportiva (Praça dos Jogos da Ásia Oriental)

Government declares that safety is restored



Return home



Clean-up and recovery



Assembly points for persons in need/ Emergency evacuation staying points

Name	Address
1. Ilha Verde Refugee Centre	Avenida do Conselheiro Borja(Opposite to Escola de Santa Teresa)
2. Patane Market	Avenida de Demétrio Cinatti
3. S. Lourenço Municipal Market Complex	Rua da Praia do Manduco
4. Mercado de S. Domingos Municipal Complex	Rua dos Mercadores

The above locations of "Refuge Centre" will be adjusted according to the real situations. If exist any change, Social Welfare Bureau will announce the latest list



警察總局
SERVIÇOS DE POLÍCIA UNITÁRIOS